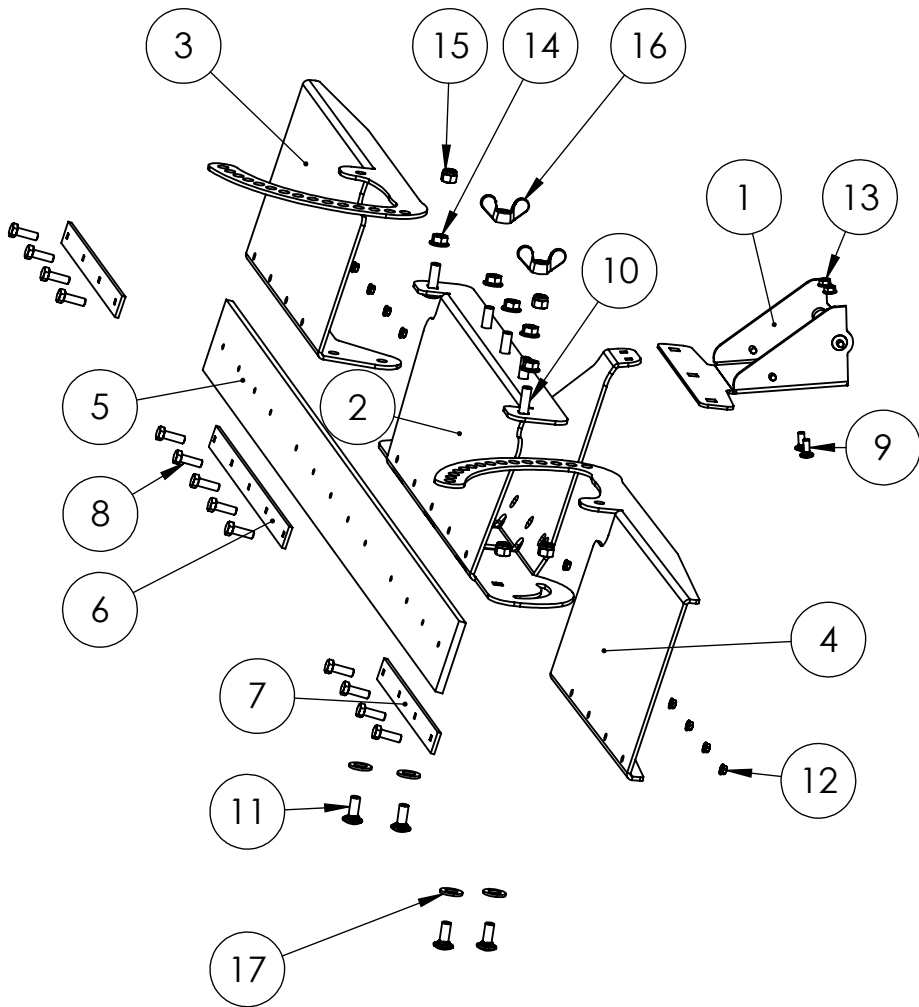
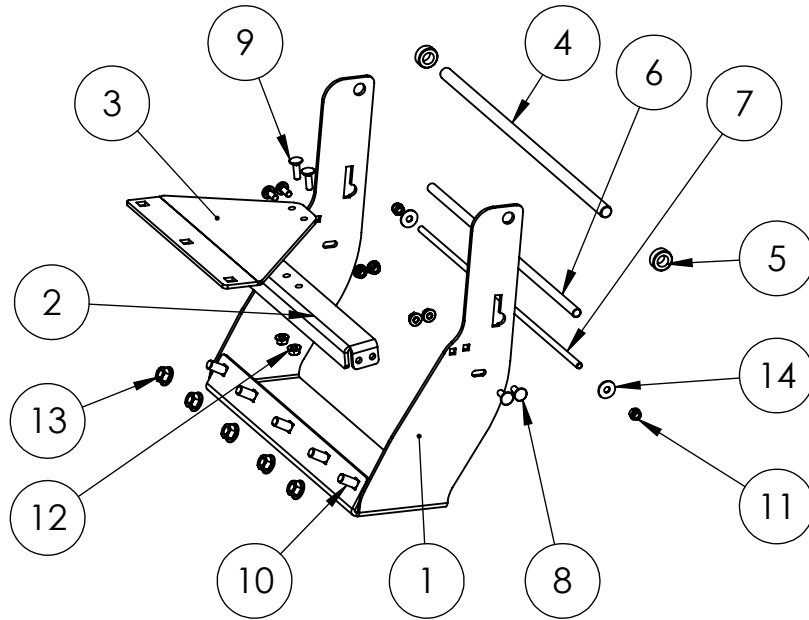


Schiebeschild 80-160 für CM2, CM2 PRO, CM2 XL



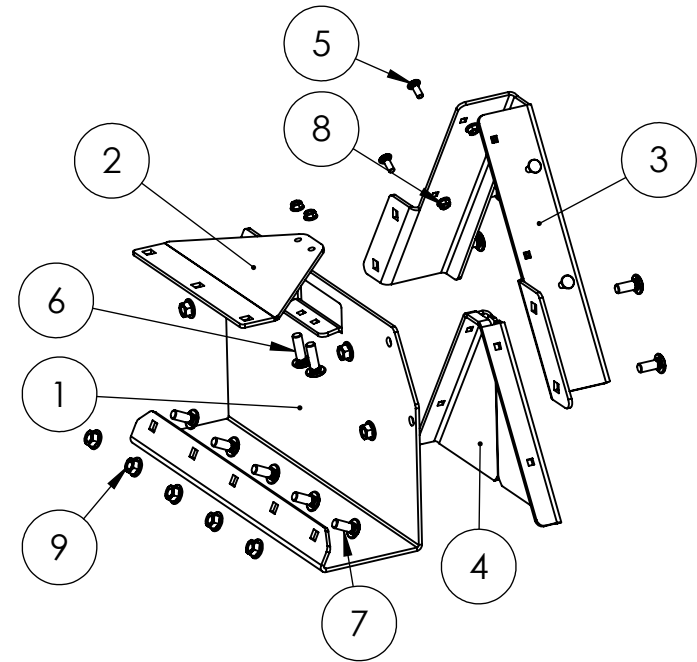
| Pos.-Nr. | Artikel | Benennung | part name | Menge/ quantity |
|----------|----------------|---------------------------------|------------------------------|--------------------|
| 1 | SB-00-00018 | Anbauschuh CM2 | quick connector CM2 | 1 |
| 2 | LA-00-00373 | Grundblech | ground plate | 1 |
| 3 | LA-00-00433 | Seitenteil rechts | side plate right | 1 |
| 4 | LA-00-00374 | Seitenteil links | side plate left | 1 |
| 5 | KT-00-00588 | Gummileiste | rubber bar | 1 |
| 6 | LA-00-00375 | Klemmleiste lang | clamping strip long | 1 |
| 7 | LA-00-00376 | Klemmleiste seitlich | clamping strip side | 2 |
| 8 | DIN-933-M6x25 | Sechskantschraube M6x25 | hexagon head screw M6x25 | 13 |
| 9 | DIN-603-M8x20 | Flachrundschrabe M8x20 | mushroom head screw M8x20 | 2 |
| 10 | DIN-603-M12x40 | Flachrundschrabe M12x40 | mushroom head screw M12x40 | 5 |
| 11 | DIN-603-M12x30 | Flachrundschrabe M12x30 | mushroom head screw M12x30 | 4 |
| 12 | DIN-SZ-M6 | Sperrzahnmutter M6 | locking nut M6 | 13 |
| 13 | DIN-SZ-M8 | Sperrzahnmutter M8 | locking nut M8 | 2 |
| 14 | DIN-SZ-M12 | Sperrzahnmutter M12 | locking nut M12 | 5 |
| 15 | DIN-985-M12 | Sechskantmutter M12 selbsts. | self-locking hexagon nut M12 | 6 |
| 16 | DIN-315-M12 | Flügelmutter M12 | wing nut M12 | 2 |
| 17 | DIN-125-17,0 | Scheibe 17,0 | washer 17,0 | 9 |

Anbauschuh CM2 PRO



| Pos.-Nr. | Artikel | Benennung | part name | Menge/ quantity |
|----------|----------------|-----------------------------|-----------------------------|--------------------|
| 1 | LA-00-00830 | Adapterplatte CM2 PRO | adapter plate CM2 PRO | 1 |
| 2 | LA-00-00831 | Strebe | bar | 1 |
| 3 | LA-00-00797 | Verstärkung | reinforcement | 1 |
| 4 | DR-00-00161 | Welle Anbaugeräte Anbindung | shaft | 1 |
| 5 | KT-00-00164 | Stellingring 16mm | adjusting ring 16mm | 2 |
| 6 | DR-00-00184 | Einstellrohr | adjusting pipe | 1 |
| 7 | DR-00-00185 | Gewindestange | threaded rod | 1 |
| 8 | DIN-603-M8x20 | Flachrundschraube M8x20 | mushroom head screw M8x20 | 4 |
| 9 | DIN-603-M8x25 | Flachrundschraube M8x25 | mushroom head screw M8x25 | 2 |
| 10 | DIN-603-M12x30 | Flachrundschraube M12x30 | mushroom head screw M12x30 | 5 |
| 11 | DIN-985-M8 | Sechskantmutter M8 selbsts. | self-locking hexagon nut M8 | 2 |
| 12 | DIN-SZ-M8 | Sperrzahnmutter M8 | locking nut M8 | 6 |
| 13 | DIN-SZ-M12 | Sperrzahnmutter M12 | locking nut M12 | 5 |
| 14 | DIN-9021-8,4 | Kofflügelscheibe 8,4 | fender washer 8,4 | 2 |

Anbauschuh CM2 XL



| Pos.-Nr. | Artikel | Benennung | part name | Menge/ quantity |
|----------|----------------|-----------------------------|-----------------------------|--------------------|
| 1 | LA-00-00796 | Adapterplatte CM2 XL | adapter plate CM2 XL | 1 |
| 2 | LA-00-00797 | Verstärkung | reinforcement | 1 |
| 3 | LA-00-00349 | Halteplatte Aufnahmedreieck | quick connector | 1 |
| 4 | LA-00-00350 | Versteifung Aufnahmedreieck | support for quick connector | 1 |
| 5 | DIN-603-M8x20 | Flachrundschraube M8x20 | mushroom head screw M8x20 | 4 |
| 6 | DIN-603-M8x30 | Flachrundschraube M8x30 | mushroom head screw M8x30 | 2 |
| 7 | DIN-603-M12x30 | Flachrundschraube M12x30 | mushroom head screw M12x30 | 9 |
| 8 | DIN-SZ-M8 | Sperrzahnmutter M8 | locking nut M8 | 6 |
| 9 | DIN-SZ-M12 | Sperrzahnmutter M12 | locking nut M12 | 9 |